



INWES Member Newsletter #1 – January 2009

Contents

| | |
|--|----|
| <i>Editorial</i> | 1 |
| <i>News from the President</i> | 2 |
| <i>News from INWES</i> | 2 |
| Annual General Members Meeting 4 (AGM4) | 2 |
| New INWES Board and Executive Committee | 4 |
| Request for proposals for Regional Conferences in 2009 and 2010 | 4 |
| INWES Membership Renewals | 4 |
| Women's Forum at WEC2008 | 5 |
| KWSE Homepage Opens English Page for Asian Networking | 5 |
| European Networking Meeting | 6 |
| INWES at SWE National Conference 2008 | 6 |
| INWES Meetings | 6 |
| <i>How INWES works: Board Committees</i> | 7 |
| <i>Introducing the INWES team: Kong-Joo Lee, President-Elect</i> | 8 |
| <i>INWES Membership</i> | 9 |
| Membership Statistics | 9 |
| Introducing INWES Members: Fraunhofer, Germany | 10 |
| <i>News from ICWES</i> | 10 |
| ICWES14 | 10 |
| ICWES15 | 11 |
| <i>News from INWES Members</i> | 11 |
| New President takes office in KWSE | 11 |
| BIEN Symposium | 11 |
| German Women's Lobby adopts resolution on women and technology | 11 |
| dib Conference 2008 | 12 |
| Book on Women in Sciences in Québec published | 12 |
| AFFESTIM and Women's sustainable development | 13 |
| AFFESTIM and Women's leadership | 13 |

Editorial

Dear INWES Members,
dear Readers,

Welcome to the first issue of the INWES Member Newsletter!

The aim of this Newsletter is to improve the information flow from INWES to its members and between INWES members. We want to inform you about what the INWES Executive Committee, the INWES Board and the INWES members do. And we hope that INWES members get to know each other, learn from each other and are encouraged to work together on singular events or longer-going projects.

The INWES Member Newsletter will come out quarterly and shall supplement the printed INWES Newsletter. The Member Newsletter is only distributed per email as PDF file, it is not printed. Its design has been deliberately kept as simple as possible. Firstly, so that it can be done by non-paid volunteers every three months and, secondly, so that the size of the resulting PDF file is small. For the latter reason, there will be no photos in the Newsletter.

We hope you enjoy this first issue. Please send us feedback, corrections, proposals for articles or regular columns, news from your organisation or your country or contributions in general. Please contact me if you like to volunteer for the Newsletter in any way.

We'd appreciate it if you forwarded the Newsletter to members of your organisation, colleagues, or persons interested in INWES and its issues.

Happy New Year!

Petra Mayerhofer

Contact: petra.mayerhofer@dibev.de



News from the President

Happy New Year. I am Sue Bird and I was elected President of INWES at ICWES14 in Lille. I am a former President of the Women's Engineering Society in UK, and I have been involved in INWES since its inception. My background is that I have worked as an acoustics engineer for nearly 40 years, specialising in sound insulation and acoustics in buildings, and noise control. I ran my own business for 20 years.

INWES had a very successful year in 2008. We were admitted into Operational Relations with UNESCO, and we had a terrific conference in July in Lille. At the conference, Korea and Japan lead discussions on the formation of Regional Networks, and several other areas are also interested. We also had a huge success for the INWES Institute Scholarship Essay Competition in Nigeria, more of which in a later edition.

This year we are hoping to continue projects we have started and also begin new ones. This takes a lot of time from the members of the committees and the people involved in the projects, and also we need funding to carry out the work. We are waiting to hear whether we have achieved charity status in Canada, which hopefully will make fundrais-

ing easier. We can raise money either by direct sponsorship by companies and corporations, or by increasing our membership, and help from you - our members - for either of these methods would be greatly appreciated. The INWES Board have always been adamant that INWES is run for and by its members, and we need help from our members in all aspects of INWES. At the moment virtually all our work is done by volunteers, and so the more people who are involved, the better.

Looking to the future now, ICWES15 will be held in Adelaide, Australia in 2011, and plans for this conference are already well advanced. We are hoping to hold Regional Conferences in 2009 and 2010, and once again that is something you can help with, if you feel you could run a Regional Conference in your area. The website has information on Conferences and on the other work we do.

Do please submit copy for this newsletter, which will come out quarterly, and also for our main newsletter which comes out annually.

Hope to hear from you.

News from INWES

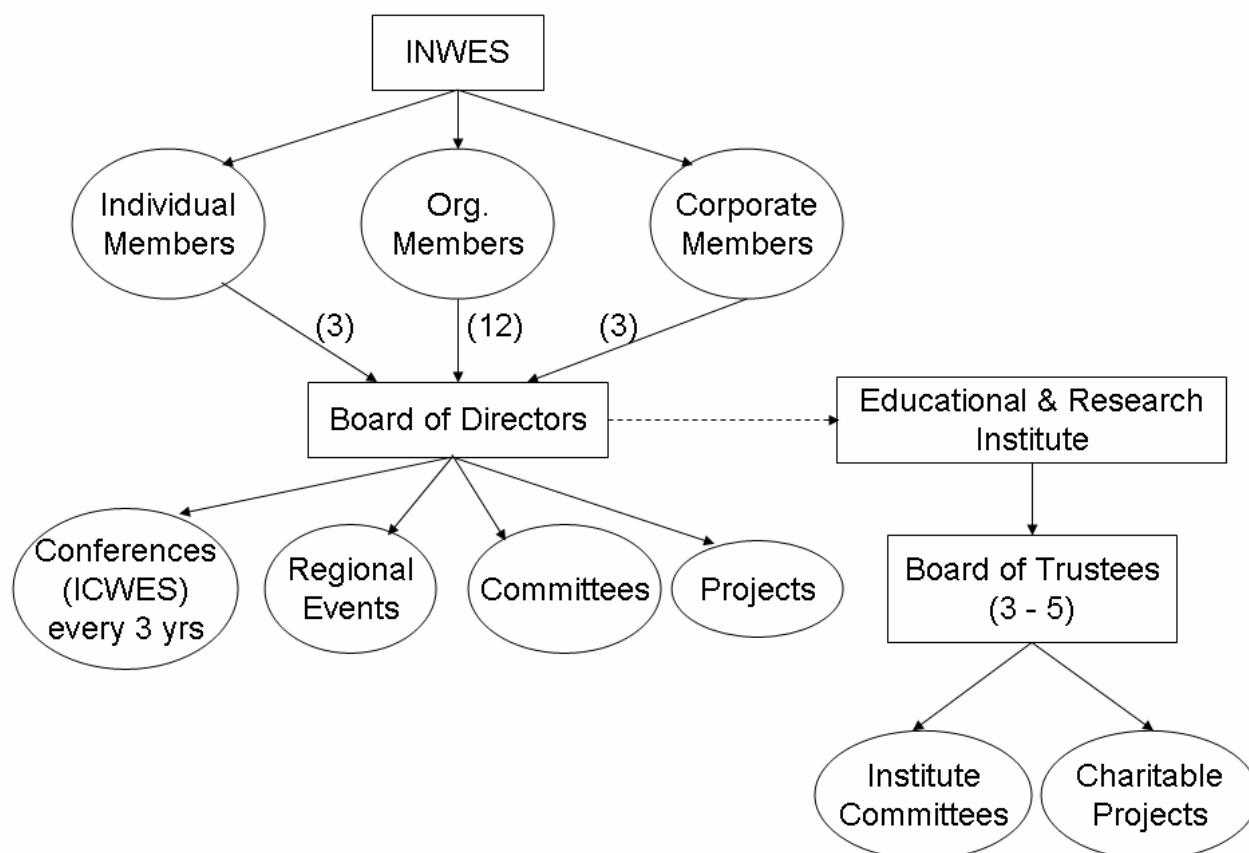
Annual General Members Meeting 4 (AGM4)

On 17 July 2008 AGM4 took place in Lille (during ICWES14). 8 individual member and representatives from 13 organisational members participated. Many interested non-members also attended.

The Executive Committee reported the activities and milestones of the year before. Here only some highlights are presented, see the official

AGM4 minutes for the total report. It will be made available at the INWES member's homepage soon.

The President Monique Frize related that INWES became an official NGO partner with UNESCO of the operational type and the creation of the INWES Education and Research Institute. Furthermore, as an orientation for all a representation of the organisational structure of INWES was created (see below).



The Vice-President Conferences Sue Bird reported the successful Regional INWES Workshop and Board Meeting in Wroclaw, Poland, in June-July 2007. The bids for ICWES15 in 2011 have been evaluated and the bid awarded to Engineers Australia. Marlene Kanga from Australia introduced the current status of the project. ICWES15 will be held in Adelaide, Australia.

The Membership and Recruitment Committee, chaired by Durdana Habib, had prepared a motion to create a new category of INWES members: University / Institute. The Universities and Research Institutes make a good pool of members for INWES since they need to recruit more women students. Furthermore, they have funds allocated to outreach for women in STEM especially in Sciences and Engineering faculties. The motion was adopted by the AGM in the form that University / Institute members have 3 representatives but no votes.

Two further motions were proposed by the Board with respect to membership:

- to change the fees for medium organisations from \$200 to 250\$ and for large organisations from \$300 to \$400 starting January 2009;
- to add a very large level of organisation (more than 5000 members) with 4 votes and a fee of 1000\$ annually starting January 2009.

Both motions carried unanimously.

In addition, there were two motions to modify the INWES By-Laws for practical reasons that were adopted by the AGM:

- modification of the INWES By-Laws so that President-Elect, Secretary and Treasurer are elected for three years (before: two years);
- modification of the By-Laws so that *ideally*, a minimum of one-third of Directors in each category (Individual, Organisational, Corporate) will be replaced at each election. The elections will normally be held in conjunction with ICWES conferences.



An important agenda item was the election of the New Board for the term 2008-2011. In January the INWES Nominating Committee, chaired by Issié Yvonne Gueye, had invited all INWES members to propose candidates and compiled the candidate's profiles before the AGM. Unfortunately, there were no candidates for the Director positions for corporate members. Before the election the candidates present introduced themselves briefly. For the others the written profiles were summarised by Gail Mattson. 12 Directors representing organisational members and 3 Directors representing individual members were elected (see below).

New INWES Board and Executive Committee

The new INWES Board was elected at AGM4 (see above) for the term 2008-2011. On 19 July, the new Board met for the first time (Board Meeting 10) and elected the President and the other members of the Executive Committee. This is our new Executive Committee and new Board:

Executive Committee

- President Sue Bird, WES, UK (Organisational Director)
- President-Elect Kong-Joo Lee, KWSE, South Korea (Organisational Director)
- Past President Monique Frize, Pathmakers Program, Canada (ex officio)
- General Secretary Nadia Ghazzali, AFFESTIM, Canada (Organisational Director)
- Treasurer Gail Mattson Organisational SWE USA (Organisational Director)
- Vice-President Conferences Monique Moutaud, France (Individual Director)
- Vice-President Programs Yvette Ramos-Aivazian, FI, France (Organisational Director)
- Executive Director Márta Escedi, Canada (ex officio)

Other Board Members

- Yolanda S. George, AAAS, USA (Organisational Director)
- Issié Yvonne Gueye, CIFISATS, Ivory Coast (Organisational Director)
- Durdana Habib, WESTIP, Pakistan (Organisational Director)

- Maki Iwakuma, INWES Japan, Japan (Organisational Director)
- Petra Mayerhofer, dib, Germany (Organisational Director)
- Francisca Nneka Okéke, Nigeria (Individual Director)
- Anna Szemik-Hojniak, University of Wroclaw, Poland (Organisational Director)
- Unesu Ushewokunze-Obatolu, WOTSAI, Zimbabwe (Organisational Director)
- Pamela Wain, UK (Individual Director)

INWES Membership Renewals and Fees for 2009

Please renew your membership for 2009 if you have not done so already. The best way to do it is via the INWES homepage (www.inwes.org → Membership Services → Membership Renewal).

If you are uncertain about your membership status (e.g. is 2009 already covered?) please contact the INWES office:
inwes@mat.ulaval.ca

Available payment methods are money order, wire transfer, credit card form and cheque. Please refer to the payment information page at the INWES homepage for further details.

To Corporate and Organisational Members: please also make sure your information and membership categories are updated on the INWES online system.

Request for proposals for Regional Conferences in 2009 and 2010

We are asking for proposals to hold Regional Conferences in 2009 and 2010.

Regional Conferences may be held in any year when there is not an International Conference for Women Engineers and Scientists (ICWES). The next two ICWES will occur in 2011 and 2014; therefore INWES would like to host Regional Conferences in 2009 and 2010, and we are asking for proposals now for both of those years. The last Regional Conference was held in Poland in 2007, and was a great success.



Regional Conferences will be held

- to encourage professional women, students and others interested science, technology, engineering and mathematics (STEM) and gender issues located in a geographical region to discuss common topics, projects and initiatives; conduct leadership and professional development training sessions and workshops; and expand their network of support
- so that interested parties can discuss matters related to women in STEM specific to that region
- to promote the interests of women in STEM in that region
- to provide a forum for people who are not able to travel to an ICWES conference
- to help women who want to set up their own STEM associations
- to put women in a region in touch with the international community of women and associations interested in STEM

For further information see

www.inwes.org/PDF/Regional_Conference_2009-2010.pdf

Women's Forum at WEC2008

by Yvette Ramos

Under the theme "Engineering: Innovation With Social Responsibility" engineers from all over the world gathered at the World Engineering Convention (WEC2008) in Brazil, Brasilia, from 2-6 December 2008. At WEC2008 the Women's Forum took place at the Brasilia Convention Center on the 4 December from 5 to 8pm.

It welcomed 300 WEC2008 participants, with a major objective of looking at the women engineers place from an international perspective, in the industry, in the technological innovation, in the engineering education and in the entrepreneurship area.

The Women's Forum, chaired by Eng. Lia Sa, the only woman president of a regional engineers association in Brazil today, consisted of plenary and thematic sessions, and elaborated concrete recommendations on empowering women in the engineering world.

Twenty one invited women speakers, moderators and coordinators represented all engineering specialties and competencies, from Armenia, Australia, Brazil, China, Cuba, France, Germany, India, Ivory Coast, Mexico, Nigeria, Poland, Portugal, Syria, United Kingdom.

The WF was organized by the Brazilian organizing team co-chaired by Iracy Sivano Dos Santos and with the help of Eng. Yvette Ramos, Director of INWES for Europe and member of the WIE.

WIE WFEO Women In Engineering standing committee kicked-off at ICWES14

Homepage: www.wec2008.org.br

KWSE Homepage Opens English Page for Asian Networking

by Jung Sun Kim

At the INWES general assembly at ICWES14, The Association of Korean Woman Scientists and Engineers (KWSE) has proposed launching of an "Asian Network" to promote information exchange, networking, advocacy and regional projects among INWES Asian members. A luncheon meeting for the preparation of this network was hosted by KWSE on the last day of ICWES14, which was funded by NIS-WIST, the Korean national institute for supporting women in science and technology. As in initial effort to realize the network, the official homepage of KWSE has recently been upgraded. One of the important features is the English page which provides space for "Asian Network" communication. KWSE invites members and friends of INWES to come visit the website at the following address: www.kwse.or.kr.



European Networking Meeting

by Petra Mayerhofer and Pam Wain

To organise ICWES14 several European associations worked successfully together: FI, F&S, f&m from France, WES from the UK and dib from Germany. We did not want that our co-operation ends with ICWES14 and in Lille spontaneously conceived the idea of a European Networking Meeting in 2009. At ICWES14 we asked for people interested in such a meeting and many persons subscribed.

So far we have discussed what target group, the agenda and contents, and the location of such a meeting could be. Furthermore, we have contacted the persons on the subscription list and asked for their interests and ideas.

Our next steps will be to fix on a location and date and to develop the agenda further.

INWES at SWE National Conference 2008

by Nadia Ghazzali

From November 6 to 8 2008, was held at Baltimore Convention Center, in Baltimore, Maryland, the **Society of Women Engineers' National Conference 2008 (SWE'08)**. Held every year during fall time, this event gathers women graduate students, technical leaders and professionals, managers, with various backgrounds, from all across United States and beyond. There are various formats of presentations: lectures and posters presentations, panel discussions, workshops. The presentations and activities focus on the career advancement (as the Career

Enhancement Series (CES) workshops), technologies in the workplace, different steps and changes of the professional life and careers in administration sectors.

This year, the conference was held under the theme "**Women Leading a Technical Revolution**". There were 5800 attendees, and 286 exhibitors, a career fair, many collegiate competitions (undergraduate and graduate levels) and various career and professional development conferences and events. Awards were given to outstanding and distinguished SWE members (pioneers, emerging leaders, new engineers and students) and scholarships were offered to undergraduate and graduate students.

INWES had a booth at this event, where were present Gail Mattson, INWES Treasurer, SWE Past President and Vice-President (Engineering) for Navarro Research and Engineering, Inc. and Nadia Ghazzali, INWES Secretary General, Chair holder of the NSERC-Industrial Alliance Chair for women in sciences and engineering and Full Professor at the Department of Mathematics and Statistics at Laval University (Quebec). During the exhibitors' session, many attendees visited the INWES booth. INWES representatives met many sponsors also interested in INWES activities (Kellogg's, Boeing, Bechtel, Intel, IBM, Exxon Mobil, Michelin, Owens-Illinois and Procter & Gamble).

The next SWE meetings will be held from October 15 to 17 2009, at Long Beach Convention Center, in Long Beach, California under the theme "Women Advancing the World of Technology" and from November 4 to 6 2010 in Orlando, Florida.

Homepage: societyofwomenengineers.swe.org

INWES Meetings

2-15 July 09 – Lille – Board Meeting #9 – Participants: Sue Bird, Claire Deschênes, Ha Do, Pascale Dubé, Márta Ecsedi, Monique Frize, Nadia Ghazzali, Issié Yvonne Gueye, Durdana Habib, Myung Hee Jung, Marlene Kanga, Kong-Joo Lee, Gail Mattson, Petra Mayerhofer, Teresa McNutt, Monique Moutaud, Yvette Ramos, Angelika Reinhard, Anna Szemik-Hojniak, Marie-Hélène Therre, Unesu Ushewokunze-Obatolu, Pam Wain

17 July 08 – Lille – Annual General Members Meeting #4 (see report)



19 July 08 – Lille – Board Meeting #10 – Participants: Sue Bird, Claire Deschênes, Pascale Dubé, Márta Ecsedi, Monique Frize, Yolanda George, Nadia Ghazzali, Issié Yvonne Gueye, Maki Iwakuma, Myung Hee Jung, Kong-Joo Lee, Gail Mattson, Petra Mayerhofer, Teresa McNutt, Monique Moutaud, Yvette Ramos, Anna Szemik-Hojniak, Unesu Ushewokunze-Obatolu, Pam Wain

4 September 08 - Skype - 6th Executive meeting #2008 - Participants: Sue Bird, Márta Ecsedi, Monique Frize, Nadia Ghazzali, Kong-Joo Lee, Gail Mattson, Monique Moutaud

13 November 08 – Skype – 7th Executive meeting #2008

Planned:

8 January 09 – Skype – 1st Executive meeting #2009

How INWES works: Board Committees

by Petra Mayerhofer

The INWES Board has several subcommittees to spread the workload across as many people as possible. Each committee has its specific mandate and responsibilities. For some of the committees these are already clearly defined and described in the INWES Policy Manual. Some committees, however, are still under development.

The membership of each committee is drawn from inside and outside the Board and should represent a variety of countries and backgrounds. Normally, the committees are chaired by a Member of the Board.

The members of the committees are appointed by the chair of the committee in consultation with the rest of the Board, which has a right of veto. However, the key committees, Nominating, Finance, and Membership and Recruitment, have their members appointed by the Board.

Mandate/responsibilities and current chairs of Board Committees

Finance Committee

Chair: Gail Mattson, USA

Responsibilities: The Committee ensures that adequate resources are available to pursue INWES' strategic and operating initiatives, as approved by the Board. The Committee assists the Treasurer in assessing the business plan and resource impact of any budget initiatives proposed as part of INWES' on-going operations.

Membership and Recruitment Committee

Chair: Durdana Habib, Pakistan

Mandate: The Committee aims at expanding the membership circle of INWES. It identifies potential members such as individuals, organizations, universities/ institutes and corporations with goals similar to INWES and invites them to become members of INWES.

Conference Committee

Chair: Monique Moutaud, France

Mandate: The Committee oversees the Conferences which are organised by or supported by INWES. The Committee makes recommendations to the INWES Executive for ICWES Hosts, also for Regional Conferences. It provides a first contact with the Committees who run the Conferences, and arranges for information and data to be passed on to Conference Organisers.

Program Committee

Chair: Yvette Ramos, France

Mandate: The Committee identifies potential programs and makes recommendations to the INWES Executive. It facilitates reporting and monitoring of the programs and related projects.

Communications and Newsletter Committee

Chair: Petra Mayerhofer, Germany

The mandate of this Committee is under development. Its preliminary mandate is to improve the communications between INWES and its members as well as communications to the general public.



Web portal Committee

Chair: Monique Frize, Canada

Mandate: The Committee will discuss and develop the web portal content and guideline for vetting information.

Nominating Committee

Chair: Issié Yvonne Gueye, Ivory Coast

Mandate: The role of the Nominating Committee is specified in the INWES By-Laws. It prepares the official lists of people standing for election to the Board, thereby trying to nominate suitable people bringing useful strengths to the Board. The Nominating Committee may actively search for such people, as well as inviting recommendations from INWES members.

Fund Development Committee

Chair: Gail Mattson, USA

The mandate of this Committee is under development.

By-Laws Committee

Chair: Pamela Wain, United Kingdom

The preliminary mandate of this Committee is to review the INWES By-Laws and to develop suggestions for a revision.

Volunteers wanted for INWES Committees

All committee chairs appreciate volunteers ready to contribute.

The committee especially interested in volunteers at the moment is the Program Committee.

If you are interested in volunteering please contact the INWES secretary at inwes@gmc.ulaval.ca.

Topics for next issue

In each issue of the INWES Member Newsletter an aspect of how INWES works will be introduced. If you are interested in specific aspects please contact Petra Mayerhofer (petra.mayerhofer@dibev.de).

Introducing the INWES team: Kong-Joo Lee

Kong-Joo Lee was elected as a member of the board of directors of INWES at the ICWES14 held in Lille, France in July, 2008. At the same meeting, Kong-Joo took the role of President-Elect. She is known domestically and internationally as a prominent scientist in the field of proteomics and related biological studies and hopes to expand her leadership in "Women in STEM" especially by initiating the "Asian Network" of women scientists and engineers.

1) Educational Background

Kong-Joo Lee graduated from the College of Pharmacy, Ewha Womans University in Seoul Korea with a Bachelor of Science degree. She received her Ph.D. in Chemistry at the Stanford University and post-doctoral training in Cancer Biology at Stanford Medical School. Her contributions since she returned to Korea opened new avenues of research on protein regulation in signaling processes and throw fresh light on

protein regulation mechanisms, which underlie many biological processes and help define the causes of aging and various diseases.

2) Professional Experiences

Kong-Joo Lee served as Dean of the Division of Molecular Life Sciences for six years (1998-2005) and Dean of Research Affairs (2005-2006) for two years at Ewha Womans University where she is currently Professor and Director of the Center for Cell Signaling & Drug Discovery Research (a government funded National Core Research Center). Through these positions, she has helped to develop, among others, a new scientific model of life science in Korea, to construct the infrastructure for excellence of research, develop a new educational program for graduate and undergraduate students and generate university-industry research collaboration. Kong-Joo was on the Editorial Board of the



Journal Molecular & Cellular Proteomics (MCP, ASBMB, 2002-2006), USA.

3) Contributions to "Women in STEM"

Kong-Joo Lee has actively participated in the establishment of the Association of Korean Woman Scientists and Engineers (KWSE) in 1993, an organization devoted to supporting women scientists and engineers in their carrier development and STEM issues. She thought it is necessary to have an organization for minority woman in STEM (less than 3-5%) to help and communicate each other. She has served as vice president (2004-2005) and President (2006-2007) during which she was organizing chairperson of ICWES13 (13th International Conference of Women Engineers & Scientists) held in Seoul, Korea, during August 26-29, 2005. ICWES13 was attended by women from 50 coun-

tries and provided participants with a new bridge that could connect women globally between the South and the North, and the East and the West. ICWES13 was also successful in helping Korean women scientists and engineers play an important role on a global level.

4) Asian Network

As Director and President-Elect of INWES, Kong-Joo, hopes to contribute in expanding the umbrella of INWES over Asia by initiating and pursuing the formation and activities of an "Asian Network." It is good to share our success of organization in Korea with other countries. An English web page has currently been open in the KWSE homepage (www.kwse.or.kr) where Asian Women in Science and Engineering can start networking by communicating in cyber space.

INWES Membership

Membership Statistics

as of 28 November 2008:

- 1 Corporate Member
- 30 Organisational Members:
 - by organisational level:
 - Level 1 – up to 50 members: 15
 - Level 2 – up to 500 members: 5
 - Level 3 – more than 500 members: 9 (from 2009 on split into "Level 3 – up to 1000 members" (7) and "Level 4 – more than 1000 members" (2))
 - by INWES region:
 - North America: 12
 - Western Europe (including Israel and Turkey): 4
 - Eastern Europe: 2
 - French speaking Africa: 3
 - English speaking Africa: 3
 - Central Asia (including India): 1
 - Southeast Asia: 2
 - Far East Asia: 2
 - Australia and New Zealand: 1
- new members:
 - Ukrainian NGO Women in Science, Ukraine, joined in July 2008
 - Fraunhofer, Germany, joined in October 2008
- 102 Individual Members
 - by INWES region:
 - North America: 8
 - South and Central America, and the Caribbean: 5
 - Western Europe (including Israel and Turkey): 13
 - Eastern Europe: 12
 - French speaking Africa: 5
 - English speaking Africa: 45
 - Middle East: 3
 - Central Asia (including India): 1
 - Far East Asia: 2
 - Australia and New Zealand: 4
 - Unknown: 3



Introducing INWES Members: Fraunhofer, Germany

by Katharina Sauter

Fraunhofer is the largest organization for applied research in Europe with a staff of some 13.000 qualified scientists and engineers work with an annual research budget of 1.3 billion Euros at over 40 different locations in Germany. Fraunhofer undertakes applied research in all the principal areas of engineering, including life sciences. Its services are solicited by customers and contractual partners in industry, the service sector and public enterprises. The organization also participates in future-oriented research projects, with the aim of finding innovative solutions for challenges in industry as well as for demands faced by society in general.

Fraunhofer is committed to bringing more women into applied research. It aims to increase the proportion of female scientists in all areas where they are currently underrepresented. The specific advantages of the Fraunhofer-Gesellschaft from the point of view of young

female scientists are reflected in the defined objectives of its human resources policy:

- a balanced mix of men and women in its research teams
- a proactive culture of equal opportunities, e.g. special PhD programs for women
- Mentoring
- family-oriented measures to improve the work-life-balance, including the establishment of child-care facilities and support for fathers on paternity leave
- research projects devoted to women's issues
- application of the principles of gender mainstreaming
- respect for the needs of dual-career couples

As Fraunhofer offers international cooperation of mutual benefit in terms of exchanging know-how with scientific institutions and technology transfer within joint industrial projects, an international network like INWES is a very important step to bring more women into applied research.

News from ICWES

ICWES14

"A changing world: new opportunities for women Engineers and scientists" – under this title the 14th International Conference of Women Engineers and Scientists (ICWES14) was held in Lille, France, from 15 to 18 July 2008. The ICWES conferences have been taken place every three years since 1964 and are the headlight events of INWES.

For the first time ICWES had been organised cooperatively by associations from several countries: from France CNISF (Conseil National des Ingénieurs et Scientifiques de France), FI (Association des Femmes Ingénieurs), F&S (Femmes et Sciences), f&m (Femmes et Mathématiques), from Germany dib (deutscher ingenieurinnenbund e.v.), and from United Kingdom WES (Women's Engineering Society). ICWES14 was hosted and sponsored by the Nord-

Pas de Calais Regional Council and the DG Research of the European Commission.

More than 500 women engineers and scientists from 60 countries gathered in Lille, among them more than 60 student volunteers. The countries most represented among the participants were France, Nigeria, Germany, Congo, UK, South Korea, Japan, USA, and Canada.

The programme included talks from women experts, technical papers on a range of subjects, and panel discussions and workshops aimed at helping women develop their careers. In total there were 11 keynote-sessions, 130 oral presentations, and 50 posters. Industrial tours to companies and factories in and around Lille as well as touristic trips were offered. Furthermore, each evening there was an outstanding social event to celebrate together and to network.



The conference focused on issues of Management and Leadership, Diversity and Ethics. Moreover, key technical topics have been discussed including opportunities and challenges in sustainable development, waste management, water resources, climate changes, information and communication technologies and new biotechnologies. Other important features of the conference were a Youth Forum, a formal session to meet "Inspirational Role Models", and the opportunity to learn more about mentoring.

For women in STEM from developing countries there was some financial support available to enable them to participate in the conference.

ICWES15

The 15th International Conference for Women Engineers and Scientists (ICWES15) will be held from 19-22 July 2011 in Adelaide, Australia.

It is hosted by Engineers Australia National Committee for Women in Engineering. Engineers Australia is the peak professional body for engineers in Australia with approximately 85,000 members comprising, engineers, associates, technologists and students.

See www.icwes15.org for further information and for preregistration.

News from INWES Members

New President takes office in KWSE

by Jung Sun Kim

Dr. Mi-Sook Won was elected as the 7th president of The Association of Korean Woman Scientists and Engineers (KWSE) and took office January 1st, 2008. She succeeds Dr. Kong-Joo Lee, the 6th President who now serves as President-emeritus and President-elect of INWES. Dr. Won is Director of the Analysis Division of the Busan Center of Korean Basic Science Institute and has served as Vice president of KWSE under Dr. Kong-Joo Lee's presidency.

BIEN Symposium

by Jung Sun Kim

On November 4th, 2008, The Association of Korean Woman Scientists and Engineers (KWSE) has hosted the 2008 BIEN Symposium held at the Korea Research Institute for Bioscience and Biotechnology in Daejeon, Korea. The theme of the meeting was "Converging technologies for the betterment of life." This year six speakers who are leading scientists in converging technologies in Korea were invited; four of them were KWSE members. Topics on hydrogen storage, therapeutic nano-materials, new energy technologies, renewable energy and

environmental technologies were presented and discussed.

BIEN was first held in 2002 to provide women scientists and engineers in Korea with opportunities to exchange their multidisciplinary expertise and research experiences on emerging technologies which include biotechnology, information technology, energy and environment technologies and nanotechnology. In 2003, BIEN was jointly organized with INWES as an international conference where 285 papers were presented. KWSE hopes to make BIEN an annual event.

German Women's Lobby adopts resolution on women and technology

by Petra Mayerhofer

In November 2008 the Deutsche Frauenrat (DF – German Women's Lobby) adopted at their General Assembly a resolution on women and technology. The resolution was prompted by the fact that women too rarely play a role in decisions on technical development. Technology is still seen as "man's business" (at least in Germany). This stereotype persists although women have been involved in the manufacturing industry from the beginning, nowadays also as engineers and technical experts. And it persists although women in non-technical occupations and



at home increasingly use complicated technical devices. Nevertheless, women's requirements and expectations with respect to technical devices are not enough taken into account during their development. The interests of healthy adult men with western cultural background seem to dominate. Those of women, children, older people, handicapped persons and people from other cultures play a much lesser role.

Nowadays, there is hardly any process to involve the "civil society" to determine technology development and research, with the exception of citizen's participation for local community projects and decisions. In the future DF intends to become much more involved in the public discussion of technology policy, development, and research. Thus, it also wants to contribute to a higher acceptance of technology and to decrease the noted "distance to technology" of women.

DF is the national council of more than 50 German women's associations and organizations. DF has special advisor status at the Economic and Social Council of the United Nations, and is a member of the European Women's Lobby (EWL).

The resolution had been prepared by the task force "High-Tech" of DF. Dr. Kira Stein, a Board Member of the German Association of Women Engineers (dib), was (with others) in charge of its draft.

dib Conference 2008

by Petra Mayerhofer

The annual national dib conference was held from 21-23 November 2008 in Essen, Germany. The theme for the conference was "Technology – influences, changes, moves – society". dib had invited women engineers and students in engineering to discuss the interactions of technology and society, to evaluate changes and transformational processes and to develop approaches for their own lives. The conference location was the perfect backdrop for this theme. Essen is the European Capital of Culture 2010 and is located in the region Ruhr that is in the middle of a monumental structural transforma-

tion from an industrial society to a knowledge society.

Besides the program the conference offered the opportunity for intensive contacts between students and working engineers, employed and unemployed engineers, and between dib members and non-members.

The conference was under the patronage of Christa Thoben, Minister for Economic Affairs and Energy of the State of North Rhine-Westphalia.

The next national dib conference will take place from 20-22 November 2009 in Hanover, Germany. The theme will be "Creativity".

Book on Women in Sciences in Québec published

by Nadia Ghazzali

In Quebec, an intensive research has been led to highlight who have been the past women role model in science. Under the direction of Chair holder and INWES Secretary General Nadia Ghazzali, the NSERC-Industrial Alliance Chair for women in sciences and engineering in Quebec, has led an historical research on women engineers and scientists in Quebec. A book has been published regarding to the result of this research "Les femmes en sciences et en génie à travers l'histoire au Québec", with the collaboration of historian and assistant to the Chair, Mélanie Lanouette. This book has two parts; first part gives an historical overview of the women pioneers in sciences in Quebec and the second part presents 37 women, who contributed to the advancement of science and of the situation of women in sciences and who are linked to Quebec City. A French copy of this book is available on the chair's web site at www.chaire-crsng-inal.fsg.ulaval.ca.

The launching of this book has been also linked to two different Symposia "400 ans de sciences au féminin" and "Le féminin de la science et de la technologie", to celebrate the 400th anniversary of the founding of Quebec City and 400 years of women involvement in sciences.



INWES Member Newsletter

Deadline for Issue #2: 22 March 2009

Contact:

Petra Mayerhofer, Chair Communications & Newsletter Committee

Email petra.mayerhofer@dibev.de

Contact INWES

International Network of Women Engineers
and Scientists

c/o Université Laval

Alexandre-Vachon Building, Room-2858

1045 De la Médecine Ave.

Quebec, Canada

G1V 0A6

Phone +(1) 418 656 2131 ext.2517

Fax +(1) 418 656 2817

Email inwes@mat.ulaval.ca

www.inwes.org

Sponsorship information:

Gail G. Mattson, INWES Treasurer

Phone +(1) 865 220-9650

Fax +(1) 865 220-9651

Email mattson@navarro-inc.com